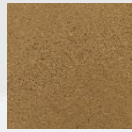


# THE MORTAR & SCREED COMPANY LTD

Buff – Light – 111

Buff – Medium – 512

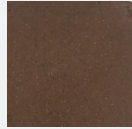
Buff – Dark – 913



Chocolate Brown – Light – 133

Chocolate Brown – Medium – 534

Chocolate Brown – Dark – 946



Marigold – Light – 166

Marigold – Medium – 567

Marigold – Dark – 968



Red Pink – Light – 199

Red Pink – Medium – 501

Red Pink – Dark – 902



Chestnut – Light – 291

Chestnut – Medium – 492

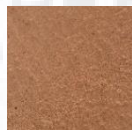
Chestnut – Dark – 693



Red Brown - Light – 355

Red Brown – Medium – 345

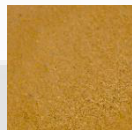
Red Brown – Dark – 335



Yellow – Light – 122

Yellow – Medium – 523

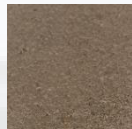
Yellow – Dark – 924



Black Brown – Light – 144

Black Brown – Medium – 545

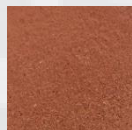
Black Brown – Dark – 946



Terracotta – Light – 177

Terracotta – Medium – 578

Terracotta – Dark – 979



Charcoal – Light – 107

Charcoal – Medium – 508

Charcoal – Dark - 9909



Straw – Light – 171

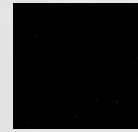
Straw – Dark – 970

Straw – Dark – 970



Ebony – Dark – 9909

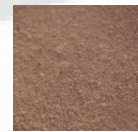
Ebony – Very Dark – 9909 XD



Brown – Light – 133

Brown – Medium – 534

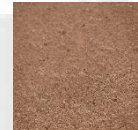
Brown – Dark – 935



Lilac – Light – 155

Lilac – Medium – 556

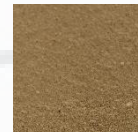
Lilac – Dark – 957



Khaki – Light – 188

Khaki – Medium – 589

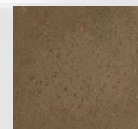
Khaki – Dark – 980



Light Brown – Light – 261

Light Brown – Medium – 262

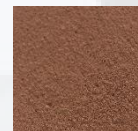
Light Brown – Dark – 462



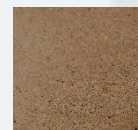
Purple – Light – 664

Purple – Medium – 665

Purple – Dark – 666



Special medium - 401



Order Line: 01952 224 202 Email: [sales@mortarandscreed.co.uk](mailto:sales@mortarandscreed.co.uk)

The colours displayed on this colour chart are for indication only  
The Mortar and Screed Company Ltd always recommend building a sample panel for approval

23/01/2019

# THE MORTAR & SCREED COMPANY LTD

The Mortar and Screed Company Ltd. have a wide range of coloured mortars which can be used to gain architectural approval, aid planning consent and simply to give an aesthetically enhanced finish to a building.

We supply coloured mortars, renders and coloured masonry sands to anywhere in the Midlands area and ordering couldn't be easier through our dedicated sales support team.

We offer a free colour matching service whereby a representative will come to your location and present the range of colours for you to choose from.

All pigments conform to BS EN-12878 and are guaranteed not to fade.

All coloured mortar are factory produced and guaranteed by The Mortar and Screed Company Ltd for colour consistency.

Our experienced staff will help you understand how to maximise material usage and minimise any waste.

The colours displayed on this sheet are for indication only and The Mortar and Screed Company Ltd always recommend building a sample panel for approval. Samples can be requested free of charge to build sample panels.

If you require any information or technical support with any of our products please do not hesitate to contact us on 01952224202 or [sales@mortarandscreed.co.uk](mailto:sales@mortarandscreed.co.uk) and we will be happy to assist.

Calf Heath Mortar Plant

Watling St Gailey

Staffordshire

ST19 5PR

Head Office

The Oaklands

Telford

TF5 0AN

Bromsgrove Mortar Plant

Sandy Lane

Bromsgrove

B61 0QR

**Order Line: 01952 224 202**  
**Email: [sales@mortarandscreed.co.uk](mailto:sales@mortarandscreed.co.uk)**



FS613602

The colours displayed on this colour chart are for indication only  
The Mortar and Screed Company Ltd always recommend building a sample panel for approval

23/01/2019

[www.mortarandscreed.co.uk](http://www.mortarandscreed.co.uk)